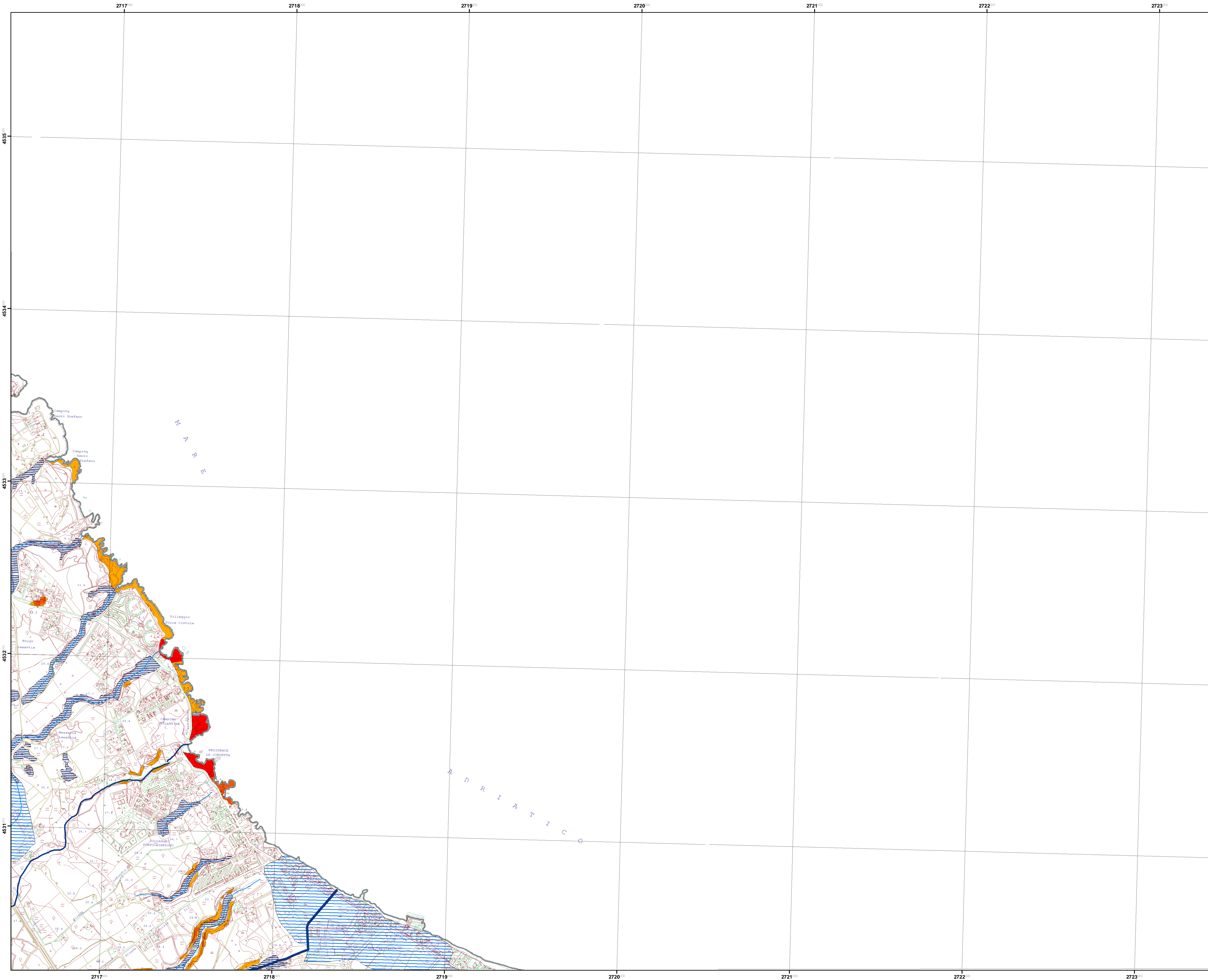
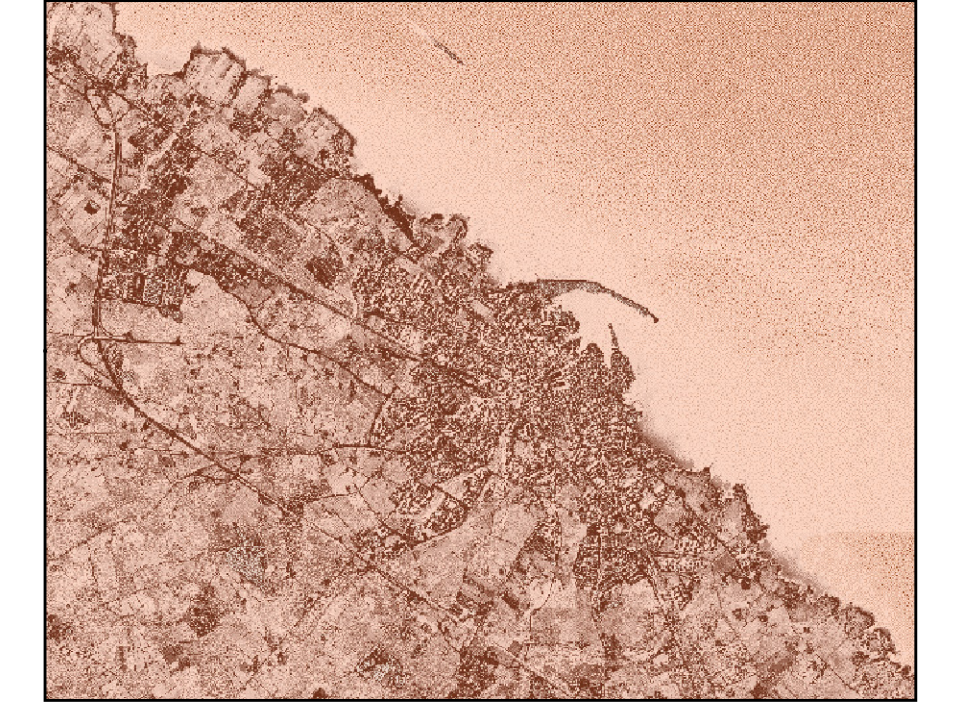


# DISSESTI IDRO - GEOMORFOLOGICI E RETICOLO IDROGRAFICO



 **COMUNE DI MONOPOLI**  
Provincia di Bari



**Piano Urbanistico Generale  
(P.U.G.)**

**Qcg 7e**

**Dissesti idro - geomorfologici e  
reticolo idrografico**

Elemento 457050

Progettista  
Prof. Arch. Federico Oliva  
FOA - Federico Oliva Associati

Collaboratori:  
Arch. Maria Macina  
Ing. Grazia Maggio  
Ing. Francesco Rotondo  
Ing. Carmelo Torre

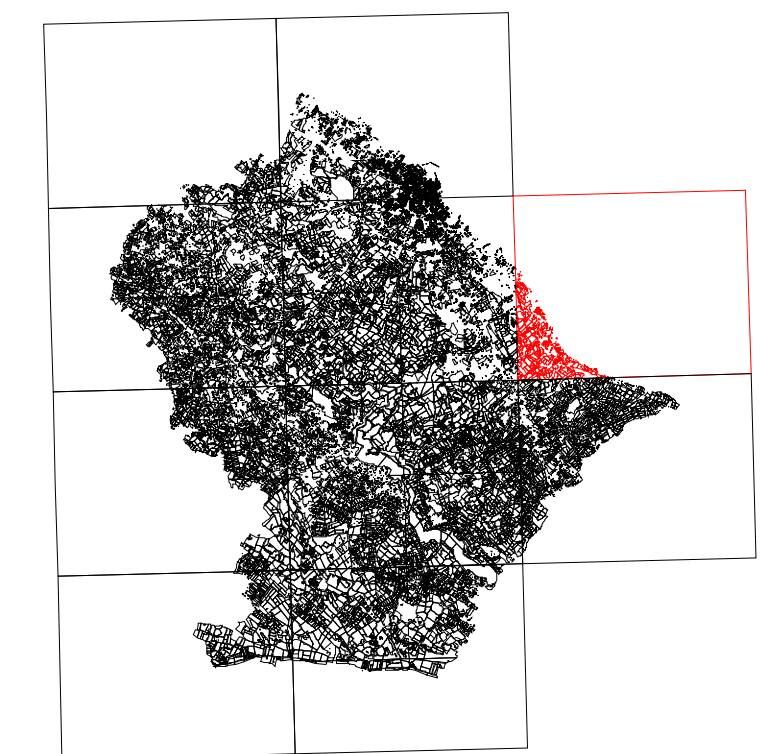
Analisi specialistiche:  
Dott. Geol. Mario Rotolo  
Dott. Biol. Giovanni Sardella  
Dott. For. Giovanni Zaccaria

Dirigente Ripartizione Urbanistica  
Ing. Andrea Lorusso











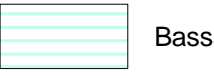
**P.U.G. - Piano Urbanistico Generale**

RETICOLATO CARTESIANO RIFERITO  
AL SISTEMA NAZIONALE GAUSS - BOAGA  
SCALA DI RAPPRESENTAZIONE GRAFICA 1:10000

COMUNE DI MONOPOLI



## LEGENDA

-  Limite comunale
- Idrografia**
- Ordine
-  1
-  2
-  3
-  4
- Pericolo crollo**
-  alto
-  medio
-  basso
- Suscettibilità allagamenti**
-  Alta
-  Media
-  Bassa