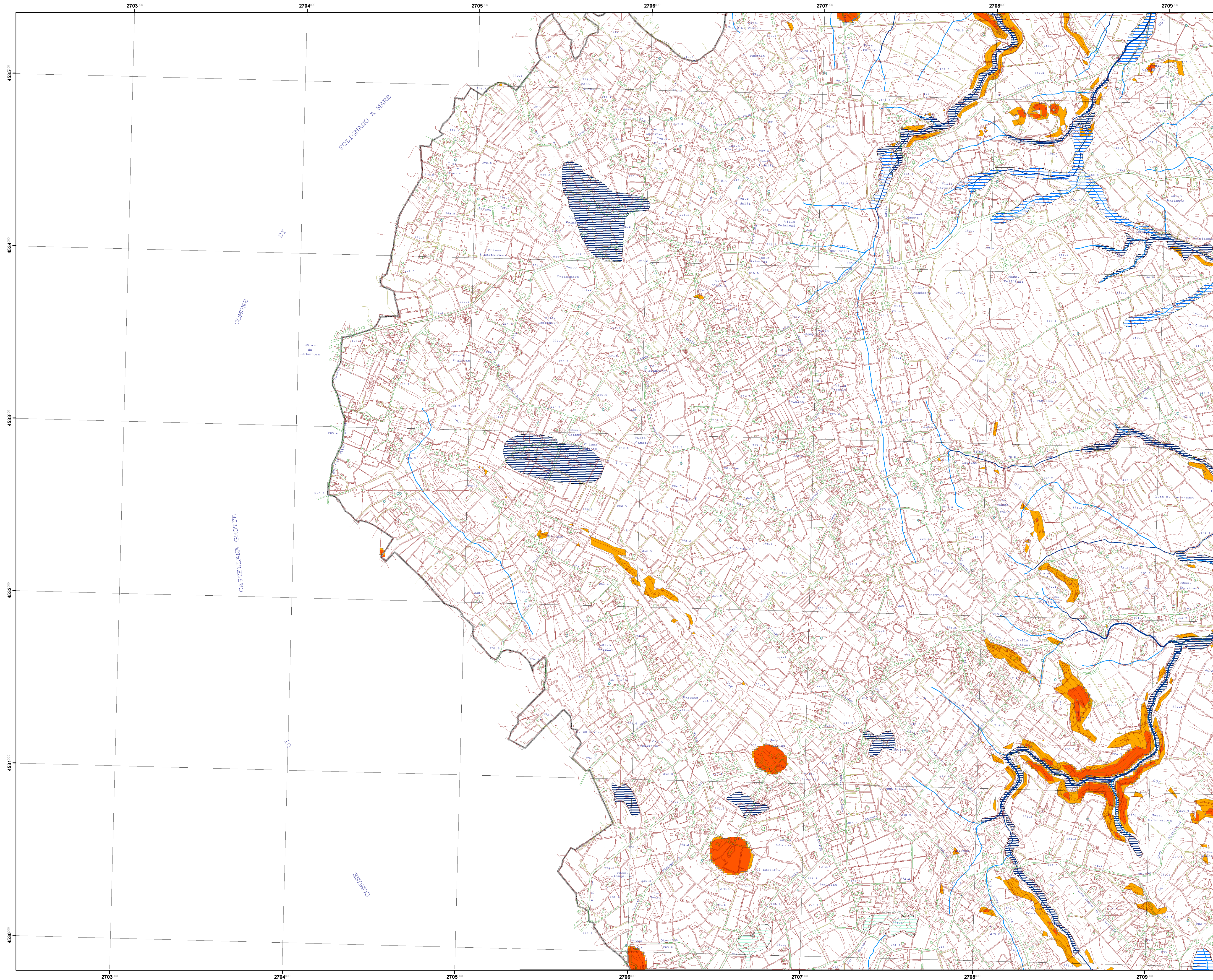
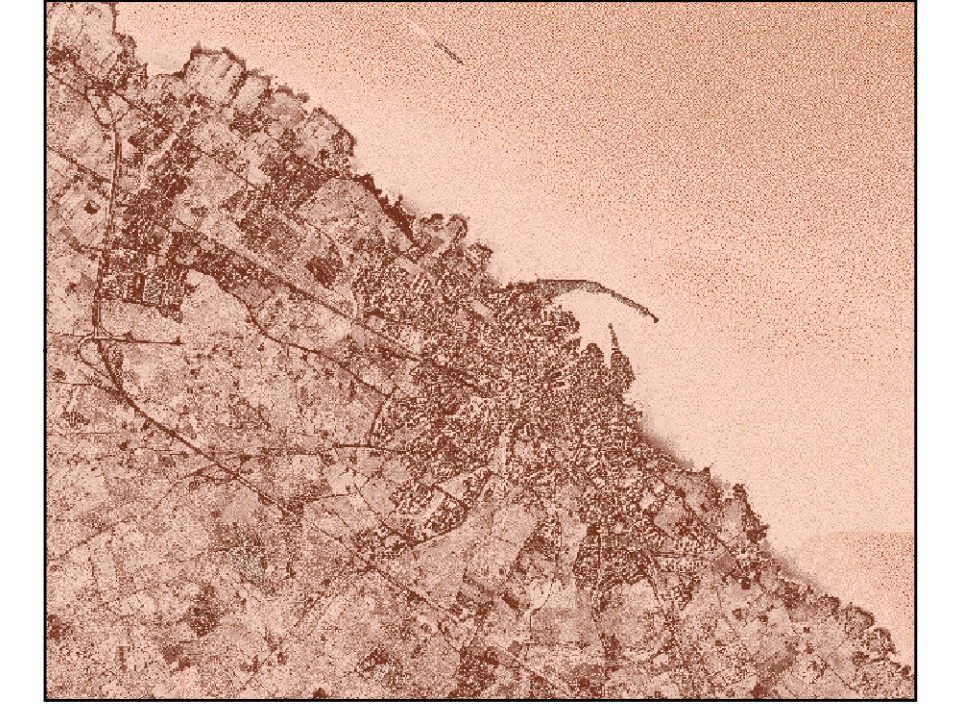


DISSESTI IDRO - GEOMORFOLOGICI E RETICOLO IDROGRAFICO



COMUNE DI MONOPOLI
Provincia di Bari



**Piano Urbanistico Generale
(P.U.G.)
Qcg 7c**

**Dissesti idro - geomorfologici e
reticolo idrografico**

Elemento 456070

Progettista
Prof. Arch. Federico Oliva
FOA - Federico Oliva Associati

Collaboratori:
Arch. Maria Macina
Ing. Grazia Maggio
Ing. Francesco Rotondo
Ing. Carmelo Torre

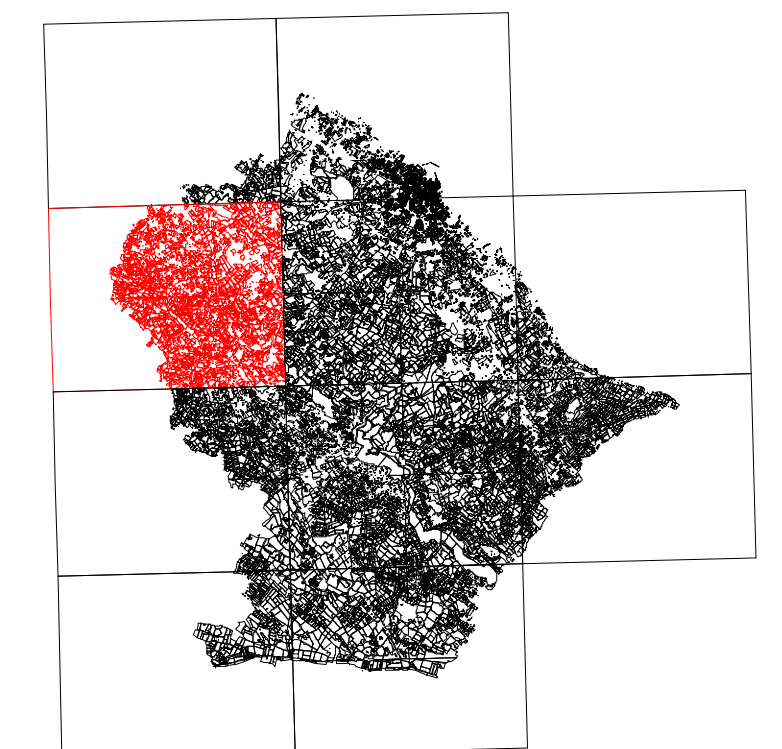
Analisi specialistiche:
Dott. Geol. Mario Rotolo
Dott. Biol. Giovanni Sardella
Dott. For. Giovanni Zaccaria

Dirigente Ripartizione Urbanistica
Ing. Andrea Lorusso









P.U.G. - Piano Urbanistico Generale

RETICOLATO CARTESIANO RIFERITO
AL SISTEMA NAZIONALE GAUSS - BOAGA
SCALA DI RAPPRESENTAZIONE GRAFICA 1:10000

COMUNE DI MONOPOLI



LEGENDA

	Limite comunale	Pericolo crollo
	Ordine	 alto
	1	 medio
	2	 basso
	3	Suscettibilità allagamenti
	4	 Alta
		 Media
		 Bassa