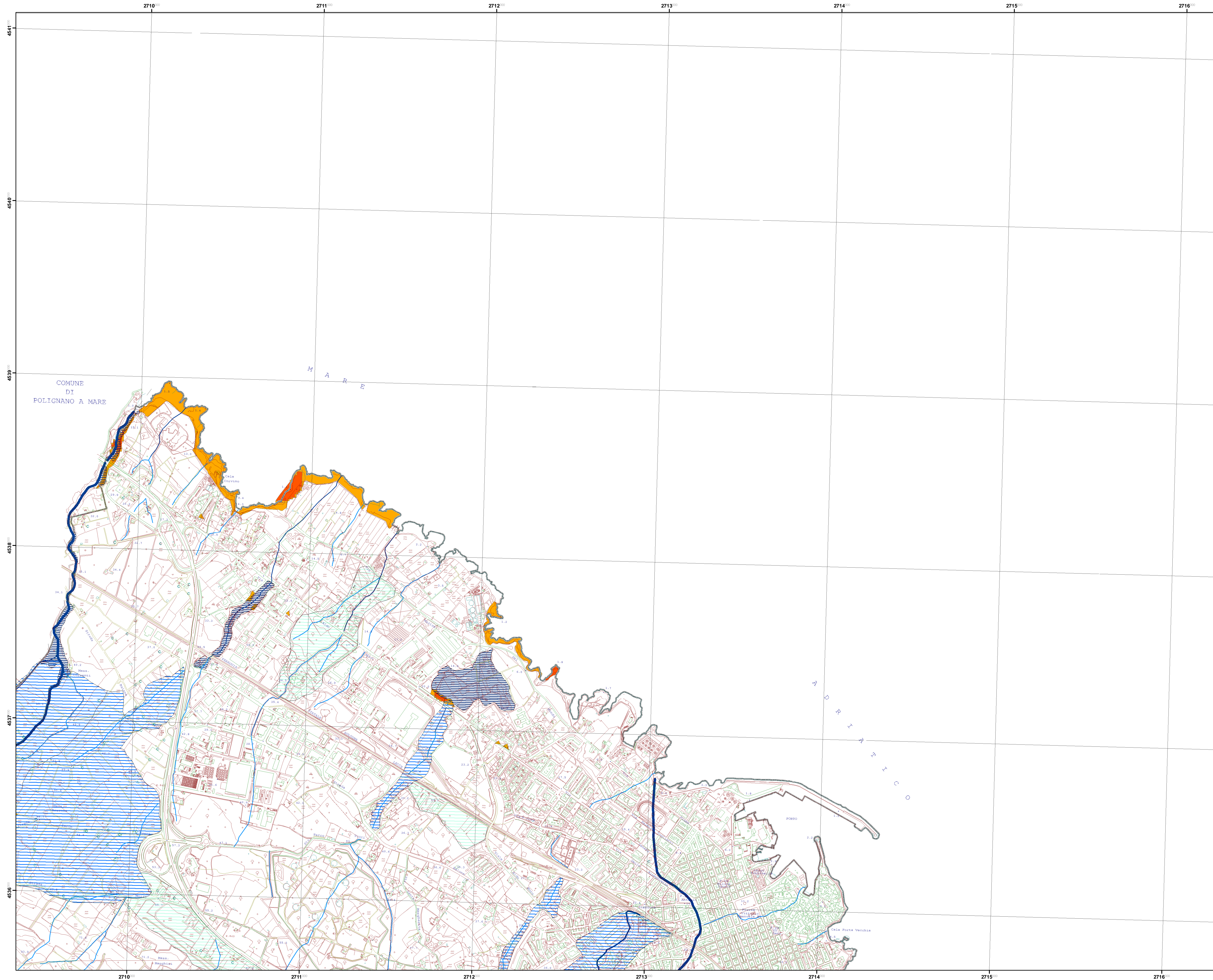
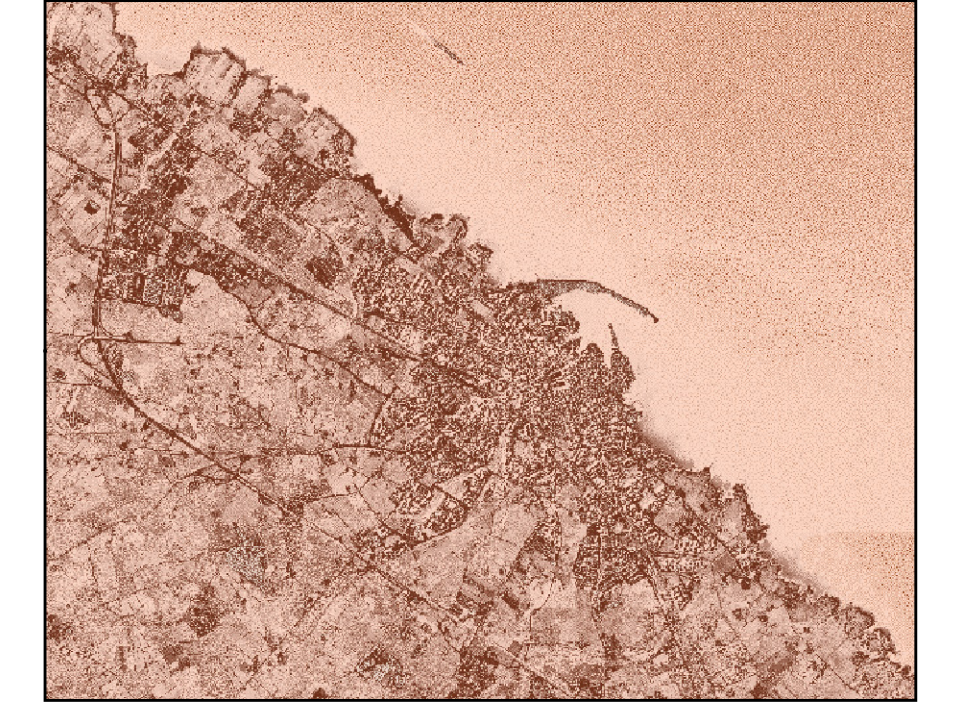


# DISSESTI IDRO - GEOMORFOLOGICI E RETICOLO IDROGRAFICO



 **COMUNE DI MONOPOLI**  
Provincia di Bari



**Piano Urbanistico Generale  
(P.U.G.)**

**Qcg 7b**

**Dissesti idro - geomorfologici e  
reticolo idrografico**

Elemento 456040

Progettista  
Prof. Arch. Federico Oliva  
FOA - Federico Oliva Associati

Collaboratori:  
Arch. Maria Macina  
Ing. Grazia Maggio  
Ing. Francesco Rotondo  
Ing. Carmelo Torre

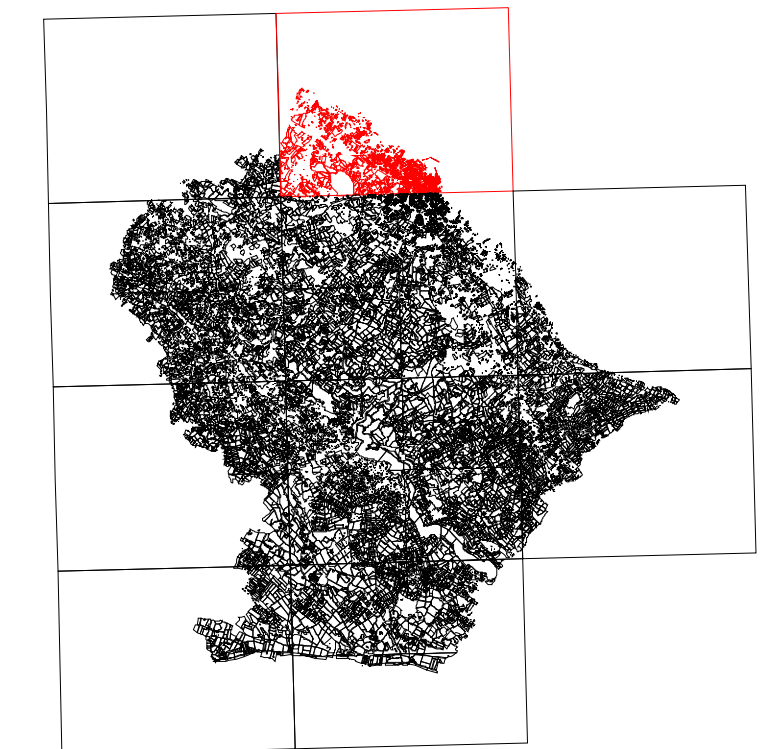
Analisi specialistiche:  
Dott. Geol. Mario Rotolo  
Dott. Biol. Giovanni Sardella  
Dott. For. Giovanni Zaccaria

Dirigente Ripartizione Urbanistica  
Ing. Andrea Lorusso









**P.U.G. - Piano Urbanistico Generale**

RETICOLATO CARTESIANO RIFERITO  
AL SISTEMA NAZIONALE GAUSS - BOAGA  
SCALA DI RAPPRESENTAZIONE GRAFICA 1:10000

COMUNE DI MONOPOLI



## LEGENDA

 Limite comunale	<b>Pericolo crollo</b>
<b>Idrografia</b>	 alto
<b>Ordine</b>	 medio
 1	 basso
 2	<b>Suscettibilità allagamenti</b>
 3	 Alta
 4	 Media
	 Bassa